

# S 42 SX

Truck-mounted concrete pump



**MADE IN GERMANY**  
by SCHWING-Stetter 

Vertical reach		42.2 m
Concrete output	max.	162 m <sup>3</sup> /h
Pressure on concrete	max.	85 bar



RECORD BREAKING ENGINEERING

# The S 42 SX from SCHWING

## The TCO champion

With its robust design and the proven technology the Schwing S 42 SX stands for reliability, performance and ease of use without any compromise. High pump power at low engine speed together with the legendary ROCK valve, famed for its robustness and dependability, leads to unmatched low operating and maintenance costs. This makes the S 42 SX the benchmark for profitability. And the well-known high resale value makes it very economical to upgrade to the next SCHWING truck-mounted concrete pump.



### Boom

The turret can be rotated 365° in either direction and the tip section can rotate 240° meaning that even the most demanding placement situations can be mastered effortlessly. And the robust construction ensures a long service life.



### Pump kit

Only the SX outriggers by SCHWING allows the longstroke pump kit P2525 with 2.50 m long pumping cylinders to be used in this class of machine. Advantage: 15% less strokes than with pump kits otherwise available in this class.



### Open hydraulic system

The open hydraulic system of the S 42 SX converts the engine power efficiently into pump power with little loss. Thus, the usual practice output rates can be realized with a fuel-saving engine speed below 1000 rpm.



### SX outriggers

The SX outriggers developed by SCHWING combines high torsional rigidity and excellent stability with minimum space requirement. The protected piston rod and internally laid hydraulic cables prevent damage and reduce service costs.



### Concrete valve

The legendary low wear ROCK valve with its optimal geometry for low-friction concrete flow ensures low service and operating costs. Being fast and easy to clean, the S 42 SX is quickly ready for the next job.



### Supply control

The water box can be filled and emptied, and the water pump, agitator, spray hose, high pressure cleaner and compressor, all controlled via the standardised supply control. This is the standard for all SCHWING truck-mounted concrete pumps for greater clarity and ease of operation.



### Remote control SC 30

The light weight, easy to use and comfortable SC 30 helps minimise fatigue, allowing the operator to focus on the job for extended periods. The powerful batteries guarantee an operating time of at least 8 hours.



### VECTOR control

The machine operator can inspect machine data, operating conditions and settings on S 42 SX, changing various parameters, all through the intuitive VECTOR control. The integrated diagnostic system ensures safe operation and also reminds the operator when maintenance is necessary.



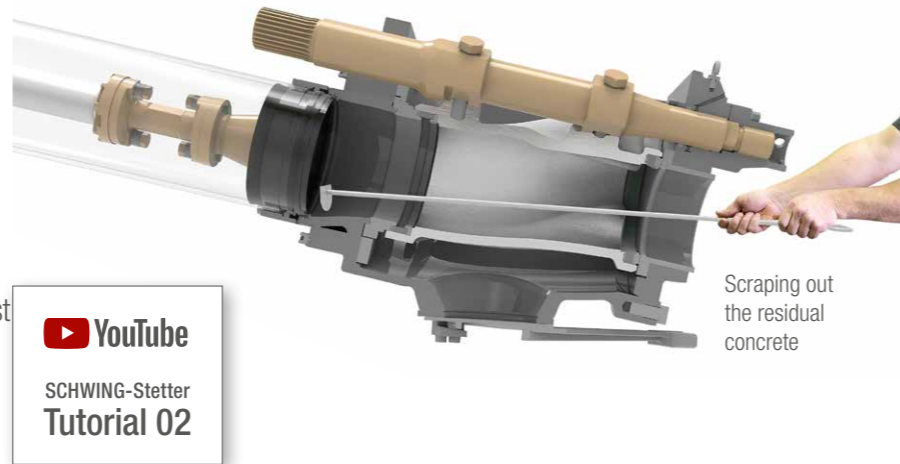
## S 42 SX Truck-mounted concrete pump

# Advantages and benefits in detail

### The ROCK

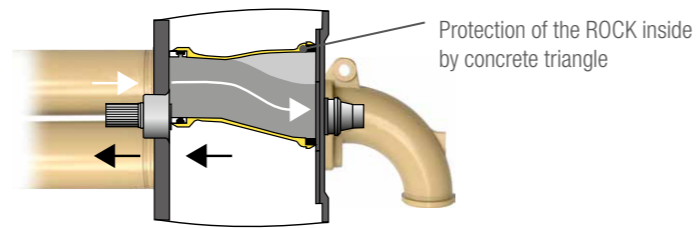
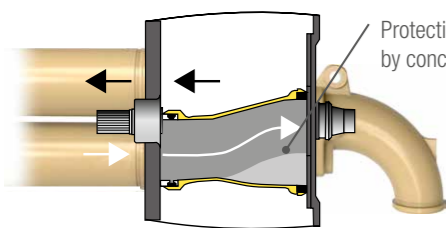
#### Clean faster with less water.

Due to its straight design, in comparison to other concrete valves, the ROCK valve is easier and quicker to clean. It also provides a direct view of the pumping pistons in the delivery cylinder. The pump kit can therefore be cleaned easily and conveniently within just two strokes. This saves water and reduces the time needed for cleaning.



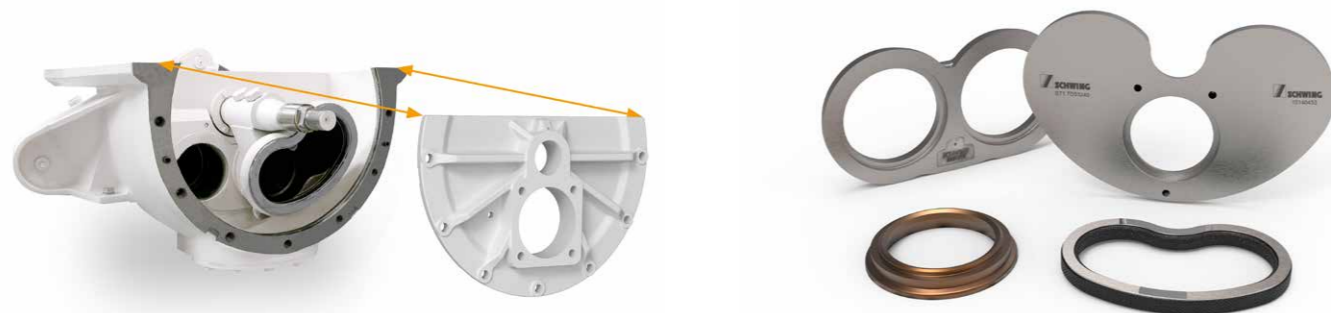
#### Intelligent wear protection.

The wear in the concrete valve is particularly high as the concrete is fed into the outlet at high pressure. In order to minimize this wear, at the most heavily loaded point of the ROCK concrete does not rub on steel, but rather on concrete. This is because the intelligent design of the ROCK leads to the formation of a concrete triangle after each shift. Protected by this concrete layer, the ROCK has a significantly longer service life than other concrete valves. For noticeably more profit per m<sup>3</sup>.



#### Easy maintenance.

The ROCK valve not only has a significantly longer service life than other concrete valves, it is also easier to maintain. After removing the housing cover, the wear parts are easily accessible and can be replaced quickly and safely. Time-consuming adjustment work is not required after replacement. The ROCK valve's 15 wearing parts is only half the number used in other concrete valves. The maintenance of the ROCK valve: simple, fast and safe.



### The long-stroke pump kit P2525

#### Less wear, more profit.

Only the SX outrigger from SCHWING enables the installation of a pump kit with 2.50 m long delivery cylinders in this class. For a standard practice delivery rate of almost 60 m<sup>3</sup>/h, the long stroke pump kit P2525 requires no more than 8 strokes per minute. The wear costs of the S 42 SX are thus reduced to an unrivaled low level and ensure significantly more profit per m<sup>3</sup>.



### The boom

#### More rotation for quicker positioning.

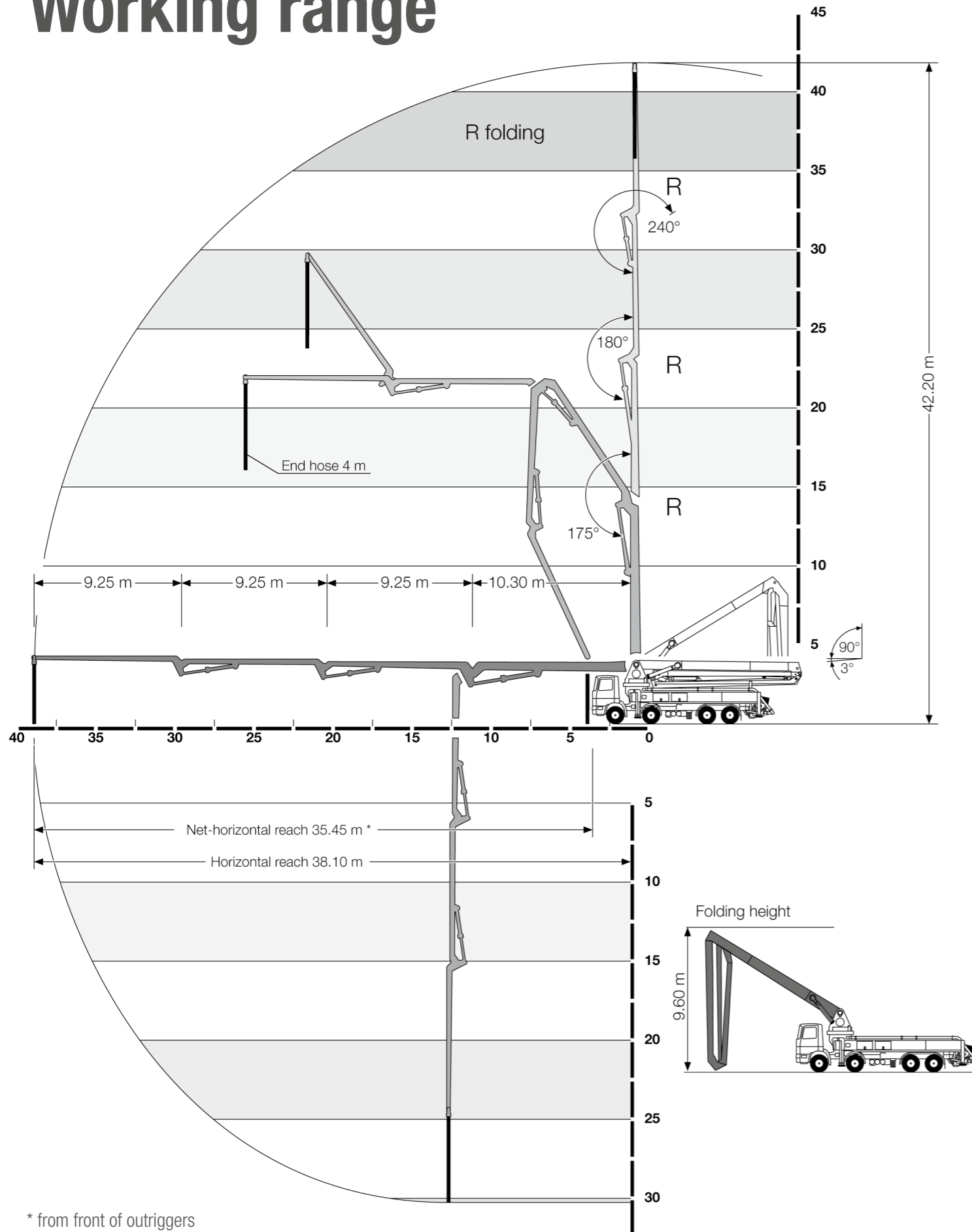
The turret of other truck-mounted concrete pumps in this class can often only be rotated in one direction by 365°. This is not the case for the S 42 SX from SCHWING: its turret can be rotated in both directions by 365°, thus providing significantly more flexibility and options in use.

2 x 365°



## S 42 SX Truck-mounted concrete pump

# Working range



\* from front of outriggers

# Technical data

### Performance

Pump kit		P2023-110/75	P2023-110/75	P2525-120/85
Drive	l/min	535	636	636
Delivery cylinders	mm	230 x 2,000	230 x 2,000	250 x 2,500
Concrete output max.	m <sup>3</sup> /h	136	161	162
Pressure on concrete max.	bar	85	85	85
Stroke rate max.	1/min.	27	32	22
Concrete valve		B-ROCK	B-ROCK	B-ROCK

### Hydraulic system

Design		open system
Hydraulic tank	l	548

### Boom 42 R

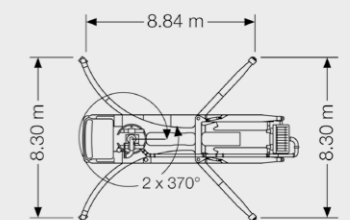
Pipeline		DN 125
Length of end hose	m	4.00
Vertical reach	m	42.20
Reach depth	m	27.60
Horizontal reach	m	38.10
Net horizontal reach	m	35.45 (from front of outriggers)
Number of boom sections		4
Height of joints (supported)	m	4.16 / 14.46 / 23.71 / 32.96
Slewing range		2 x 360°
Folding height	m	9.60

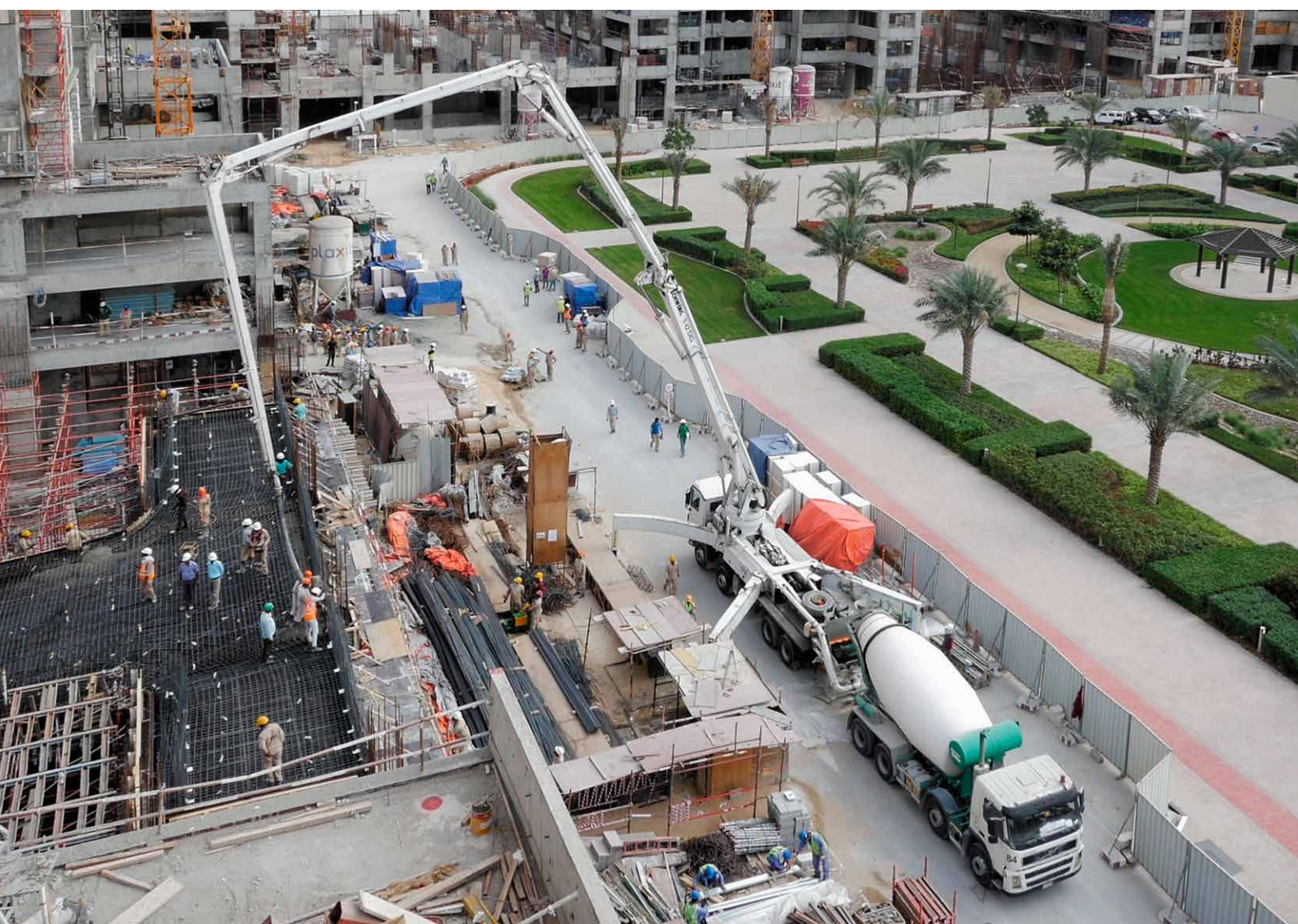
### Support

Outrigger width, front	m	8.30
Outrigger width, rear	m	8.30
Outrigger load, front	kN	240
Outrigger load, rear	kN	220

### Miscellaneous

Water tank	l	610
------------	---	-----





SCHWING concrete pumps. Efficiency as standard.



**SCHWING**  
**Stetter**

SCHWING GmbH  
Heerstrasse 9-27 · 44653 Herne, Germany  
Phone +49 23 25 - 987-0 · Fax +49 23 25 - 72922  
[www.schwing-stetter.com](http://www.schwing-stetter.com) · [info@schwing.de](mailto:info@schwing.de)

Stetter GmbH  
Dr.-Karl-Lenz-Strasse 70 · 87700 Memmingen, Germany  
Phone +49 83 31 - 78-0 · Fax +49 83 31 - 78 275  
[www.schwing-stetter.com](http://www.schwing-stetter.com) · [info@stetter.de](mailto:info@stetter.de)

Subject to technical and dimensional modifications. Illustrations are non-binding. The exact standard specification, the scope of delivery and the technical data are detailed in the offer.