

FBP 26⁴ / FBP 29⁴

Truck-mixer pump



MADE IN GERMANY
by SCHWING-Stetter 

Vertical reach		25.10 m / 28.26 m
Concrete output	max.	61 m ³ /h
Pressure on concrete	max.	71 bar
Nominal volume		7 m ³



RECORD BREAKING ENGINEERING

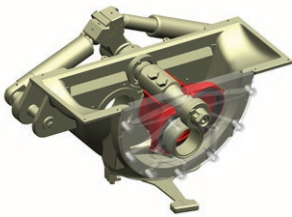
The FBP 26⁴ and FBP 29⁴ from SCHWING-Stetter

Advantages and benefits at a glance



Unique operating comfort

Greater comfort and higher occupational safety: the entire FBP is operated from the ground, except for the cleaning of the mixing drum. All control elements have been combined ergonomically with two central control units. For greater comfort and shorter set-up times.



Low-maintenance and easy cleaning

Specifically designed for truck-mixer pumps: the compact S-ROCK. Its legendary robustness and easy cleaning reduce the maintenance costs and cleaning time to an unmatched low.



Boom or hose

The rotating outlet (optional) expands the FBP applications. In addition to the classic concrete placing via the boom, the truck-mixer pump will also pump concrete or screed via hose pipes to cover the areas the boom cannot reach. For more flexibility and higher machine utilisation.



Manoeuvrable and compact

The short rear overhang of the FBP makes manoeuvring at the job site easier and decreases the risk of damage in rough terrain. The small outrigger footprint ensures high set-up flexibility whilst ensuring safe support even on the most restricted construction sites.



FBP 26⁴ / FBP 29⁴ Truck-mixer pump



Proven boom construction

The Z-folding boom consists of a small boom width, low boom weight and higher torsional stiffness. The Z-folding of the final boom section and its large opening angle increases flexibility and enables concrete placing right up to the FBP.



All included

Packing more equipment into a truck-mixer pump makes it much more flexible and able to serve a wider variety of situations. Therefore the FBP 26⁴ and FBP 29⁴ provide numerous storage options. Hoses up to 5 m in length can be safely carried along in the aluminium trays mounted on both sides, and in the tool box on the right side is space for couplings, tools and other accessories.



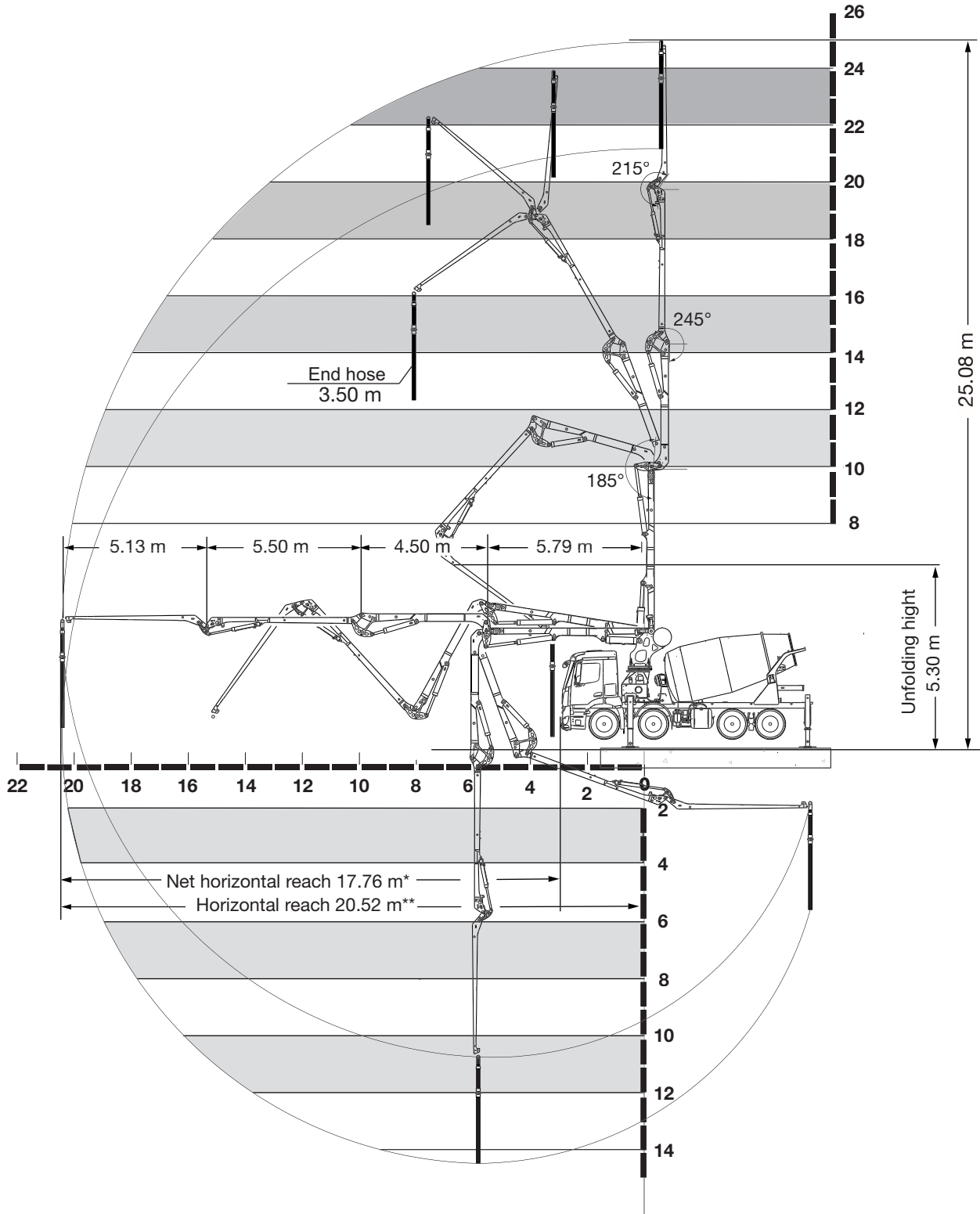
Easy to service

Daily filling and emptying of the water box can be carried out easily and safely from the ground. Changing the pumping piston can also be done in no time: free access to the water box allows quick work and ensures short downtimes.



FBP 26⁴ / FBP 29⁴ Truck-mixer pump

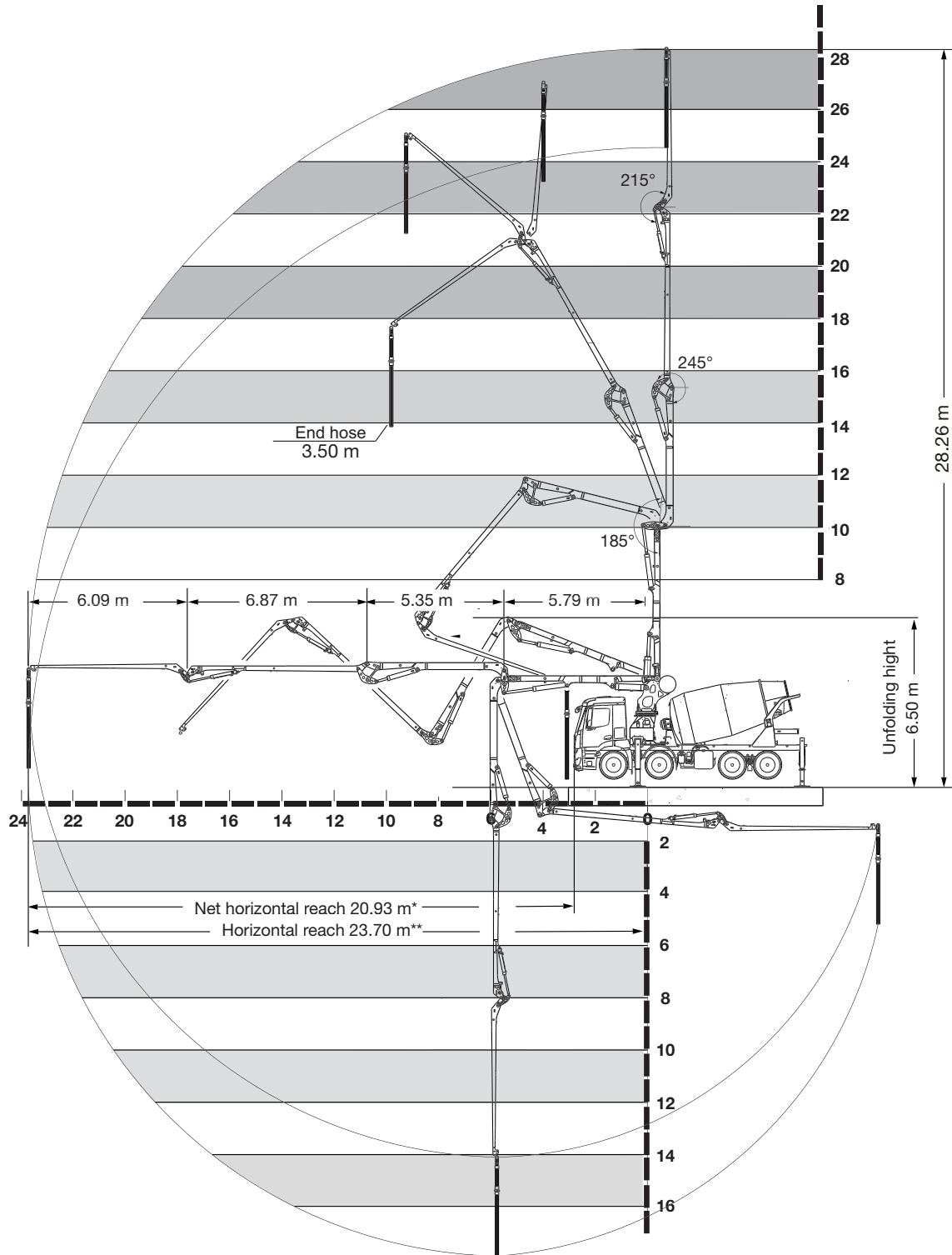
Working range FBP 26⁴



* From front bumper

** From centre of Turret

Working range FBP 29⁴



* From front bumper
 ** From centre of Turret

FBP 26⁴ / FBP 29⁴ Truck-mixer pump

Technical data

Performance		FBP 26⁴	FBP 29⁴
Pump kit		P1020	P1020
Delivery cylinders	mm	200 x 1,000	200 x 1,000
Concrete output max.	m ³ /h	61	61
Pressure on concrete max.	bar	71	71
Stroke rate max.	1/min.	32	32
Concrete valve		S-ROCK	S-ROCK
Hydraulic system			
Design		open system	
Hydraulic tank	l	325	
Drum			
Type		AM 7 FHC (C4) (Light Line)	
Nominal volume	m ³	7	
Compressed air water tank	l	650	
Boom		26 Z	29 Z
Delivery line		DN 125 (Option: DN 100)	DN 100
Length of end hose	m	3.50	3.50
Vertical reach	m	25.08	28.26
Reach depth	m	14.75	17.93
Horizontal reach	m	20.93	23.70
Net horizontal reach	m	17.76 (within vehicle width)	20.93 (within vehicle width)
Number of boom sections		4	4
Slewing range		365°	365°
Folding height	m	5.30	6.50
Support			
Outrigger width, front	m	< 4	
Outrigger width, rear	m	2.50 (within vehicle width)	
Outrigger load, front	kN	250	
Outrigger load, rear	kN	180	
Chassis (examples*)		Mercedes-Benz Arocs 3243 B	MAN TGS 35.420 BB
Axles configuration		8x4 (2+2)	8x4 (2+2)
Wheelbase		4,550	4,300

Maximum concrete output and maximum pressure on concrete cannot be achieved simultaneously.

*other chassis possible

Equipment & Options

Standard equipment

Hydraulic chute adjustment

End hose 3.00 m

Hydraulic chute adjustment

Floodlight on ladder platform

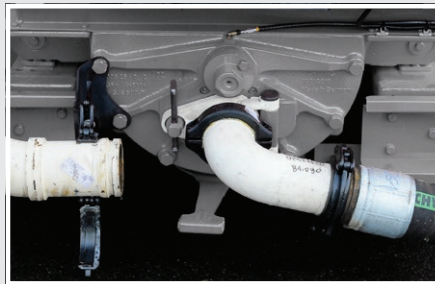
Extension chute (plastic insert exchangeable)

Filling level sensor (switches off the drum when hopper is full)

Selected options



High pressure cleaner



Rotating outlet
(for pumping with hoses)



Concrete shut-off-valve



Oil cooler

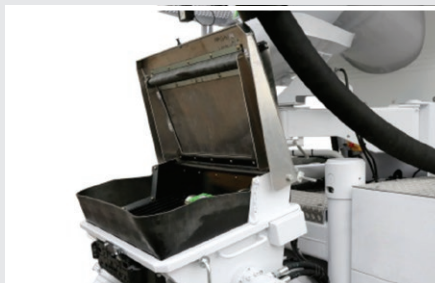


Admixture system (compressed-air version)

Flexible in use: the covering for hopper



Covering for hopper in position "Own filling"



Covering for hopper in position
"External filling"



Covering for hopper in position
"Own + external filling"



schwing-stetter



schwing.stetter



SCHWING-Stetter truck-mixer pumps.
Flexible transport and placing.



**SCHWING
Stetter**

SCHWING GmbH
Heerstrasse 9-27 · 44653 Herne, Germany
Phone +49 23 25 - 987-0 · Fax +49 23 25 - 72922
www.schwing-stetter.com · info@schwing.de

Stetter GmbH
Dr.-Karl-Lenz-Strasse 70 · 87700 Memmingen, Germany
Phone +49 83 31 - 78-0 · Fax +49 83 31 - 78 275
www.schwing-stetter.com · info@stetter.de

Subject to technical and dimensional modifications. Illustrations are non-binding. The exact standard specification, the scope of delivery and the technical data are detailed in the offer.